

we are a small  
**team** doing big  
things



# Z-POWER



**EEPCINDIA**  
ENGINEERING THE FUTURE

**IEC**



## « COMPANY AT A GLANCE

### Welcome to the World of Z-Power

A Company with high ambitions towards global business in the most possible positive fashion with full of eagerness to hear & understand customer's needs, strive to fulfill it to achieve their satisfaction level at our best.

### About Z-Power

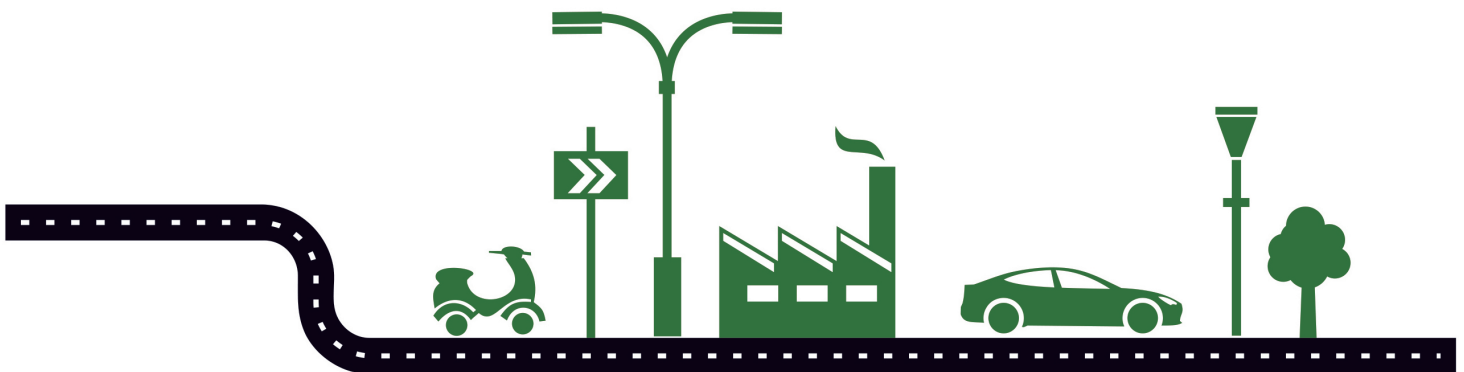
Z-Power's history starts with the early independents days somewhere in 1953 when head of our family started his business of Automotive Battery trading, later transformed on a larger scale with a well known Battery Showroom in Punjab as Kissan Battery House back in 1977.

By then, Z-Power Batteries came in to popularity as most affordable and reliable battery brand in Punjab and later expanded across the surrounding regions. In 1990s company started their own manufacturing unit under contractual agreement on a smaller scale, which gradually grew as a fulltime running production house for Z-Power and for multiple other brands in India and abroad.

Today, Z-Power is manufacturing Automotive Batteries, E-Vehicle Batteries, Tubular Batteries and Flat Plate Solar Batteries from the said production house for its own brand as well as for 12 different brands as an OEM. The company has now been engaged in Manufacturing, Trading, Imports and Export with more than 400 different battery models in its portfolio, with multiple battery types such as Heavy Duty Dry Charged Batteries, SMF Automotive Batteries, Motorcycle Batteries, AGM VRLA Batteries, GEL Batteries, Tubular Plate Batteries and Electric Vehicle Batteries. All these products are widely used in various applications such as Automotive Segment, Solar & UPS Back-up Segment, Electric Vehicles Segment, Industrial Battery Segment, Telecommunications Segment etc.

Z-Power has settled itself as one spot for all kinds of your battery needs including 2V, 6V and 12V Batteries covering major battery industry of Automotive, Solar and Industrial battery segment.

Constant focus on quality and on time delivery service has lead company to achieve remarkable success so far and will emphasize to continue the same.



*"The best preparation for tomorrow, is doing your best today..." - H. Jackson Brown, Jr.*



## Z-POWER WORLDWIDE



### OFFICE

Chandigarh, Barnala (Pb.), Sharjah (UAE), Malaysia

### DOMESTIC NETWORK

J&K, Himachal Pradesh, Punjab, Haryana, Delhi, Uttarakhand, U.P.

Bihar, West Bengal, Assam, Nagaland

Rajasthan, Gujrat, Maharashtra, M.P., Chattisgarh

A.P., Telangana, Karnataka, Kerala, Tamilnadu

### INTERNATIONAL NETWORK

U.A.E., Saudia Arabia, Bahrain, Iraq, Iran, Lebanon, Syria, Oman, Yemen

Afghanistan, Pakistan, Nepal, Bhutan, Myanmar, Sri Lanka, Cambodia, Turkmenistan

Liberia, Nigeria, Ghana, Mali, Benin, Ethiopia, Uganda, Kenya, Tanzania

Malawi, Zimbabwe, Zambia, South Africa, Mauritius

Kingdom of Tonga, Colombia, Argentina

*"Believe you can and you are half way there..." Theodore Roosevelt*

## « PRODUCT LIST

**Product Title :** Zero Maintenance Automotive Battery

**Features:**

- Ca-Ca Battery with Silver Protection
- Pure Grade Raw Materials - Long Life
- Vibration Free construction for rough road conditions
- Maintenance Free Operations
- Magic Eye Indicator
- Range: 32Ah to 200Ah, DIN 44Ah to 100Ah.



**Product Title :** Tubular Battery

**Features :**

- Industry best 8mm High Standard Tubular Plates
- Deep Cycle Operations
- High Charge Acceptability
- Ultra Long Service Life
- Nominal Low Maintenance Required
- Range: 45Ah to 210Ah



**Product Title :** Motorcycle Battery (SMF)

**Features:**

- Vibration Free Body
- AGM VRLA Technology
- High CCA rating
- Copper Terminals
- Maintenance Free Operations
- Range: 2.5LC to 14LB



**Product Title :** E-Rickshaw Battery

**Features:**

- Unique Calcium Hybrid Technology
- Tubular Positive Plates
- Anti Gassing Technology
- High Deep Cycle Capabilities
- Long Service Life
- Range : 95Ah to 140Ah



## « PRODUCT LIST

### Product Title : AGM VRLA Battery

#### Features:

Superior Lead Calcium Alloy Grid,  
High Density Active Materials,  
Quick charge recovery after over discharging,  
High Impact ABS Casing,  
Leak Proof Maintenance Free Operations,  
Range : 7Ah to 200Ah



### Product Title : GEL VRLA Battery

#### Features:

High Density Lead Calcium Tin Silver Alloy,  
Silica Gel Composition,  
Micro Porous Synthetic Separators,  
Ultra Low Self Discharge,  
Leak Proof Maintenance Free Operations,  
Range: 35Ah to 200Ah



### Product Title : Tubular Gel OPzV Battery

#### Features:

20 Years Designed Float Life,  
Positive Tubular Plates,  
Thicker Spines for Positive Tubular Plates,  
Gelled Electrolyte - No Acid Stratification  
Deep Discharge Capacity,  
Wide Operational Temperature Range,  
Range: 2V 200Ah to 3000Ah



### Product Title : Front Terminals Battery

#### Features:

Unique vent valve design,  
Superior Deep Discharge Capacity,  
Ideal for 19 inch to 23 inch Power Cabinets,  
Ultra Low Self Discharge,  
Leak Proof Maintenance Free Operations,  
Range: 40Ah to 200Ah



## TECHNICAL PARTICULARS

| Sr. No.           | Volt | Capacity C20 (Ah) | Model JIS Standard |           | Battery Dimension (mm) |     |     |      | Terminal | CCA @-18°C (Amps) | RC in mins | Apprx. Qty per pallet | Approx Wet Weight (Kg) |
|-------------------|------|-------------------|--------------------|-----------|------------------------|-----|-----|------|----------|-------------------|------------|-----------------------|------------------------|
|                   |      |                   | New Model          | Old Model | L                      | W   | H   | T. H |          |                   |            |                       |                        |
| 1                 | 12   | 32                | 34B20              | NS40      | 197                    | 130 | 202 | 226  | B//A     | 270               | 35         | 224                   | 8.60                   |
| 2                 | 12   | 35                | 38B20              | NS40Z     | 197                    | 130 | 202 | 226  | B//A     | 280               | 40         | 224                   | 9.00                   |
| 3                 | 12   | 40                | 42B20              | NS40Z     | 197                    | 130 | 202 | 226  | B//A     | 310               | 48         | 224                   | 9.60                   |
| 4                 | 12   | 40                | 50B24              | NS60A/N40 | 236                    | 130 | 202 | 226  | B//A     | 310               | 60         | 189                   | 11.00                  |
| 5                 | 12   | 45                | 55B24              | NS60      | 236                    | 130 | 202 | 226  | B//A     | 360               | 74         | 189                   | 11.40                  |
| 6                 | 12   | 60                | 65D23-BH           |           | 231                    | 173 | 202 | 226  | A        | 470               | 78         | 140                   | 15.40                  |
| 7                 | 12   | 65                | 80D23-BH           |           | 231                    | 173 | 202 | 226  | A        | 500               | 88         | 140                   | 16.00                  |
| 8                 | 12   | 70                | 85D23-BH           |           | 231                    | 173 | 202 | 226  | A        | 550               | 100        | 140                   | 16.80                  |
| 9                 | 12   | 75                | 95D23-BH           |           | 231                    | 173 | 202 | 226  | A        | 600               | 110        | 140                   | 17.40                  |
| 10                | 12   | 50                | 48D26-BH           | N50       | 258                    | 170 | 202 | 226  | A        | 370               | 64         | 140                   | 14.50                  |
| 11                | 12   | 55                | 60D26-BH           | N50Z      | 258                    | 170 | 202 | 226  | A        | 460               | 76         | 140                   | 15.00                  |
| 12                | 12   | 60                | 65D26-BH           | NS70      | 258                    | 170 | 202 | 226  | A        | 520               | 85         | 140                   | 15.80                  |
| 13                | 12   | 65                | 80D26-BH           | NS70      | 258                    | 170 | 202 | 226  | A        | 550               | 92         | 140                   | 16.50                  |
| 14                | 12   | 70                | 85D26-BH           | NS70Z     | 258                    | 170 | 202 | 226  | A        | 600               | 105        | 140                   | 17.40                  |
| 15                | 12   | 75                | 95D26-BH           | NS70Z     | 258                    | 170 | 202 | 226  | A        | 650               | 115        | 140                   | 18.10                  |
| 16                | 12   | 65                | 70D31-BH           | N70A      | 305                    | 170 | 202 | 225  | A        | 510               | 95         | 119                   | 18.30                  |
| 17                | 12   | 70                | 75D31-BH           | N70       | 305                    | 170 | 202 | 225  | A        | 550               | 110        | 119                   | 18.80                  |
| 18                | 12   | 75                | 80D31-BH           | N70Z      | 305                    | 170 | 202 | 225  | A        | 600               | 116        | 119                   | 19.20                  |
| 19                | 12   | 80                | 95D31-BH           | NX120-7   | 305                    | 170 | 202 | 225  | A        | 630               | 120        | 119                   | 20.10                  |
| 20                | 12   | 85                | 105D31-BH          | N90       | 305                    | 170 | 202 | 225  | A        | 690               | 128        | 119                   | 20.60                  |
| 21                | 12   | 90                | 110D31-BH          | N95       | 305                    | 170 | 202 | 225  | A        | 750               | 145        | 119                   | 21.50                  |
| 22                | 12   | 90                | 90E41-BH           | N100A     | 403                    | 173 | 205 | 229  | A        | 635               | 145        | 70                    | 24.40                  |
| 23                | 12   | 100               | 105E41             | N100      | 403                    | 173 | 205 | 229  | A        | 675               | 165        | 70                    | 25.20                  |
| 24                | 12   | 120               | 120F51             | N120      | 510                    | 180 | 210 | 239  | A        | 835               | 205        | 56                    | 34.00                  |
| 25                | 12   | 150               | 150G51             | N150      | 510                    | 210 | 212 | 239  | A        | 900               | 270        | 48                    | 37.10                  |
| 26                | 12   | 165               | 165G51             | N170      | 510                    | 210 | 212 | 239  | A        | 925               | 288        | 48                    | 39.00                  |
| 27                | 12   | 180               | 180H52             | N180      | 515                    | 273 | 212 | 240  | A        | 1050              | 355        | 36                    | 45.90                  |
| 28                | 12   | 200               | 190H52             | N200      | 515                    | 273 | 212 | 240  | A        | 1120              | 380        | 36                    | 48.10                  |
| <b>DIN Series</b> |      |                   |                    |           |                        |     |     |      |          |                   |            |                       |                        |
| 29                | 12   | 44                | 54434              | DIN44     | 207                    | 175 | 190 | 190  | A        | 370               | 60         | 168                   | 12.30                  |
| 30                | 12   | 55                | 55530              | DIN55     | 242                    | 175 | 190 | 190  | A        | 430               | 90         | 140                   | 14.20                  |
| 31                | 12   | 60                | 56030              | DIN60     | 242                    | 175 | 190 | 190  | A        | 470               | 100        | 140                   | 14.80                  |
| 32                | 12   | 66                | 56628              | DIN66     | 278                    | 175 | 190 | 190  | A        | 580               | 114        | 126                   | 16.10                  |
| 33                | 12   | 74                | 57412              | DIN74     | 278                    | 175 | 190 | 190  | A        | 695               | 122        | 126                   | 17.50                  |

\* Any data, description or specification mentioned above are subject to revision by Z-Power Impex Pvt. Ltd. - India. While such information is believed to be accurate as mentioned above, Z-Power makes no guarantee and hereby disclaims all gurantees, express or implied with regard to the accuracy or completeness of such information. The user is solely responsible for determining the suitability of the product(s) mentioned above, user intended and in user specific application.

"I can't change the direction of the wind, but I can adjust my sails to reach my destination..." - Jimmy Dean





## Zero Maintenance Automotive Batteries

When it is matter of pure power & performance, Z-Power has the right solution for that. Meet Mr Performance, the Zero Maintenance Automotive Batteries.

It has been made to perform for those who strive for more; it generates power under extreme climatic conditions, no matter where you are. It's Calcium - Calcium Lead Silver Alloys makes sure of High Cranking and Anti Corrosive service in any situations, while presence of Silver also adds it as unmatched performance for years long life by reducing gassing effect, less destructive on high temperatures and remain optimum with active materials pasted on the grid.

The unique combination of Calcium Lead Silver alloy results into increased corrosion resistance, greater resistance to high temperatures, minimum self discharge, longer shelf life and longer service life. These batteries are also Zero Maintenance, meaning it does not require any water top up throughout its service life. Once fitted, you do not need to worry for frequent checks and top-ups of distiller water.

### Key Features:

- Calcium Calcium Silver Alloy,
- Superior performance over conventional MF Batteries,
- Zero Maintenance operations,
- Long Service Life without maintenance,
- High Cranking under various climatic conditions,
- Increased Corrosion resistance,
- Ultra Low Shelf Life,
- High Cranking Power.



*"What we think, We become..." - Buddha.*



## Tubular Batteries

Z-Power Tubular Batteries are low maintenance batteries with positive tubular plates which are known for its excellent characteristic of power back up for longer time duration. It has imported 8mm Tubular gauntlets from Germany which produces extremely good result keeping reasonable gap between active materials and electrolyte, ensuring stable performance and it reduces the speed of releasing antimony from positive grid, thus provides longer period of power back up and longer life for the battery service too.

Z-Power Tubular Batteries are also uniquely designed which contains 30% more electrolyte which acts as a coolant, controls rising temperature of battery and in presence of carbon fitted in water level indicator reverts water back into the battery which comes out due to vaporization enhancing ultra low maintenance to it.

### Key Features:

- 8 mm Positive Tubular Plates,
- Superior High Density active materials,
- Excellent Corrosion Resistance,
- Water Level indicators with Carbon,
- High Acid volume per Ampere,
- Excellent cyclic performance & charge acceptance,
- Deep discharge abilities,
- Ultra Low Self Discharge.

### Applications:

- Solar PV Applications,
- Fire Alarm & Security Systems,
- Railway Signaling,
- Emergency Lighting,
- Telecommunications,
- UPS & Online UPS,
- Network Communication Equipments,
- Home Inverters.

## » TECHNICAL PARTICULARS

| TUBULAR BATTERY |      |                 |        | Battery Dimension (mm) |     |     | Recommended Warranty (Years) | Approx Weight (kg) | Cell Layout & Terminals |
|-----------------|------|-----------------|--------|------------------------|-----|-----|------------------------------|--------------------|-------------------------|
| Sr. No.         | Volt | Capacity C20 ah | Model  | L                      | W   | H   |                              |                    |                         |
| 1               | 12   | 125             | N-1300 | 510                    | 210 | 249 | 3                            | 38.00              | AI/E                    |
| 2               | 12   | 100             | N-1100 | 505                    | 190 | 462 | 3                            | 48.00              | AI/E                    |
| 3               | 12   | 145             | N-1600 | 505                    | 190 | 462 | 4                            | 50.75              | AI/E                    |
| 4               | 12   | 160             | N-1800 | 505                    | 190 | 462 | 4                            | 54.50              | AI/E                    |
| 5               | 12   | 170             | N-1850 | 505                    | 190 | 462 | 4                            | 57.00              | AI/E                    |
| 6               | 12   | 190             | N-2100 | 505                    | 190 | 462 | 4                            | 58.50              | AI/E                    |
| 7               | 12   | 210             | N-2400 | 505                    | 190 | 462 | 4                            | 63.50              | AI/E                    |
| 8               | 12   | 250             | N-2600 | 505                    | 190 | 462 | 4                            | 66.00              | AI/E                    |

\* Any data, description or specification mentioned above are subject to revision by Z-Power Impex Pvt. Ltd. - India. While such information is believed to be accurate as mentioned above, Z-Power makes no guarantee and hereby disclaims all guarantees, express or implied with regard to the accuracy or completeness of such information. The user is solely responsible for determining the suitability of the product(s) mentioned above, user intended and in user specific application.

*"A creative man is motivated by the desire to achieve, not by the desire to beat others...." - Ayn Rand.*



## Motorcycle Batteries

Z-Power Motorcycle Batteries are specially made for extreme power output for longer time and high cranking abilities to meet modern generation standards in Motorcycles.

Using AGM separators, it makes sure leak proof operations avoiding acid leakage and damage to surrounding parts of your vehicle. VRLA Technology ensures proper vaporization of needful gassing while uniquely designed battery container controls and recycles large portion of water being vaporized in the air. High strength of active materials and extra thick plates provides unmatched performance for cranking in extreme cold and extreme heat and humid climates, suitable for Self Starting vehicles.

The unique combination of AGM with specially chosen Lead Alloy results into increased corrosion resistance, better performance in high temperatures, minimum self discharge, longer shelf life and longer service life. These batteries are completely Sealed Maintenance Free, meaning it does not require any water top up or maintenance throughout its service life.

### Key Features:

- AGM VRLA & GEL VRLA Battery,
- Superior performance over conventional MF Batteries,
- Sealed Leak Proof Battery Container,
- Complete Sealed Maintenance Free operations,
- Long Service Life without Maintenance,
- High Cranking under various climatic conditions,
- Ultra Low Shelf Life,
- High Cranking Power.

## » TECHNICAL PARTICULARS

| MOTORCYCLE BATTERIES |          |                     | Dimension (mm) |       |        | CCA / -<br>18° C | Weight<br>(kg) | Terminal | Qty/Box |
|----------------------|----------|---------------------|----------------|-------|--------|------------------|----------------|----------|---------|
| SR.NO                | Volt (V) | Capacity<br>(20 HR) | Length         | Width | Height |                  |                |          |         |
| N 2.5LC-MF           | 12       | 2.5                 | 80             | 70    | 105    | 20               | 1.00           | —        | 12      |
| N 4LBZ-MF            | 12       | 4                   | 113            | 70    | 85     | 55               | 1.45           | 4        | 10      |
| N 5LBZ MF            | 12       | 5                   | 120            | 60    | 130    | 70               | 1.80           | 5        | 8       |
| NS - 5LBZ MF         | 12       | 5                   | 113            | 70    | 105    | 70               | 1.80           | 5        | 8       |
| N7LBZ MF             | 12       | 7                   | 146            | 60    | 130    | 85               | 2.25           | 5        | 6       |
| N 9LBZ MF            | 12       | 9                   | 135            | 75    | 139    | 120              | 3.00           | 5        | 6       |
| N 14 LBZ MF          | 12       | 14                  | 132            | 89    | 164    | 190              | 4.60           | 5        | 6       |

\* Any data, description or specification mentioned above are subject to revision by Z-Power Impex Pvt. Ltd. - India. While such information is believed to be accurate as mentioned above, Z-Power makes no guarantee and hereby disclaims all guarantees, express or implied with regard to the accuracy or completeness of such information. The user is solely responsible for determining the suitability of the product(s) mentioned above, user intended and in user specific application.

*"We should not give up and we should not allow problems to defeat us..." -Dr. A.P.J. Abdul Kalam*



## « TECHNICAL PARTICULARS

| AGM VRLA     | Capacity (AH) at 27°C |            |           |           | Dimensions (mm) ± 3mm |       |        |              | Normal Charging Current (A) | Short Circuit Current (A) | Battery Weight (Kg) ± 3% | Terminal Type |
|--------------|-----------------------|------------|-----------|-----------|-----------------------|-------|--------|--------------|-----------------------------|---------------------------|--------------------------|---------------|
| Model        | 20hr 10.5V            | 10hr 10.5V | 5hr 10.5V | 1hr 10.2V | Length                | Width | Height | Total Height |                             |                           |                          |               |
| ZPSMF-12/7   | 7.00                  | 6.51       | 5.95      | 4.20      | 151.5                 | 65.0  | 94.0   | 100.0        | 0.70                        | 105.0                     | 2.15                     | F2            |
| ZPSMF-12/7.5 | 7.50                  | 6.98       | 6.38      | 4.50      | 151.5                 | 65.0  | 94.0   | 100.0        | 0.75                        | 112.0                     | 2.35                     | F2            |
| ZPSMF-12/10  | 10.00                 | 9.30       | 8.50      | 6.00      | 151.0                 | 98.0  | 94.5   | 100.0        | 1.00                        | 150.0                     | 3.35                     | F2            |
| ZPSMF-12/12  | 12.00                 | 11.16      | 10.20     | 7.20      | 151.0                 | 98.0  | 94.5   | 100.0        | 1.20                        | 180.0                     | 3.55                     | F2            |
| ZPSMF-12/18  | 18.00                 | 16.74      | 15.30     | 10.80     | 180.0                 | 77.0  | 172.0  | 172.0        | 1.80                        | 270.0                     | 6.00                     | T4            |
| ZPSMF-12/26  | 26.00                 | 24.18      | 22.10     | 15.60     | 166.0                 | 176.0 | 125.0  | 125.0        | 2.60                        | 390.0                     | 8.45                     | T5            |
| ZPSMF-12/42  | 42.00                 | 39.06      | 35.70     | 25.20     | 197.0                 | 165.0 | 179.0  | 179.0        | 4.20                        | 630.0                     | 13.40                    | T6            |
| ZPSMF-12/45  | 45.00                 | 41.85      | 38.25     | 27.00     | 197.0                 | 165.0 | 179.0  | 179.0        | 4.50                        | 675.0                     | 14.50                    | T6            |
| ZPSMF-12/75  | 75.00                 | 69.75      | 63.75     | 45.00     | 349.0                 | 167.0 | 190.0  | 192.0        | 7.50                        | 1125.0                    | 23.50                    | T6            |
| ZPSMF-12/100 | 100.00                | 93.00      | 85.00     | 60.00     | 331.0                 | 173.0 | 223.0  | 225.0        | 10.00                       | 1500.0                    | 30.00                    | T6            |
| ZPSMF-12/120 | 120.00                | 111.60     | 102.00    | 72.00     | 405.0                 | 172.0 | 226.0  | 226.0        | 12.00                       | 1800.0                    | 37.20                    | T8            |
| ZPSMF-12/150 | 150.00                | 139.50     | 127.50    | 90.00     | 485.0                 | 170.0 | 242.0  | 242.0        | 15.00                       | 2250.0                    | 43.70                    | T8            |
| ZPSMF-12/165 | 165.00                | 153.45     | 140.25    | 99.00     | 485.0                 | 170.0 | 242.0  | 242.0        | 16.50                       | 2475.0                    | 48.50                    | T8            |
| ZPSMF-12/200 | 200.00                | 186.00     | 170.00    | 120.00    | 522.0                 | 238.0 | 219.0  | 225.0        | 20.00                       | 3000.0                    | 60.00                    | T8            |

| GEL VRLA      | Capacity (AH) @ 27°C |             |            |            | Dimensions (mm) ± 3mm |        |        |              | Normal Charging Current (A) | Short Circuit Current (A) | Battery Weight (Kg) ± 3% | Terminal Type |
|---------------|----------------------|-------------|------------|------------|-----------------------|--------|--------|--------------|-----------------------------|---------------------------|--------------------------|---------------|
| Model         | 20 hr 10.5V          | 10 hr 10.5V | 5 hr 10.5V | 1 hr 10.2V | Length                | Width  | Height | Total Height |                             |                           |                          |               |
| ZPSMF-G12/100 | 105.00               | 100.00      | 83.00      | 55.00      | 485.00                | 170.00 | 242.00 | 242.00       | 10.00                       | 1575.00                   | 42.30                    | T8            |
| ZPSMF-G12/150 | 158.00               | 150.00      | 124.50     | 82.50      | 522.00                | 238.00 | 219.00 | 225.00       | 15.00                       | 2250.00                   | 58.10                    | T8            |
| ZPSMF-G12/180 | 194.00               | 180.00      | 145.25     | 96.25      | 522.00                | 238.00 | 219.00 | 225.00       | 17.50                       | 2760.00                   | 64.40                    | T8            |
| ZPSMF-G12/200 | 210.00               | 200.00      | 166.00     | 110.00     | 522.00                | 238.00 | 219.00 | 225.00       | 20.00                       | 3150.00                   | 72.10                    | T8            |

\* Any data, description or specification mentioned above are subject to revision by Z-Power Impex Pvt. Ltd. - India. While such information is believed to be accurate as mentioned above, Z-Power makes no guarantee and hereby disclaims all guarantees, express or implied with regard to the accuracy or completeness of such information. The user is solely responsible for determining the suitability of the product(s) mentioned above, user intended and in user specific application.

*"The best and most beautiful thing in the world cannot be seen or even touched, they must be felt with the heart..." - Helen Keller*





### AGM VRLA Batteries

Z-Power AGM VRLA Batteries are high quality, maintenance free batteries produced at state of the art manufacturing facility with advanced battery manufacturing technologies and with high purity grade of raw materials. These batteries have long float and cyclic life span, super high specific gravity and ultra low self discharge. Battery container is completely sealed, leak proof and can be placed in any direction to operate. It has excellent anti corrosion properties and it performs flawlessly in variable climatic conditions.

Z-Power AGM VRLA Batteries have design life ranging from 5 to 10 years and it is suitable for multiple applications.

### Key Features:

- Design life of 5 to 10 years at 27°C, depending upon the model,
- Superior Lead Calcium Alloys with High Density active materials,
- Valve Regulated Maintenance Free operations,
- Excellent cyclic performance with quick charge acceptance after deep discharge,
- Completely Sealed Leak Proof battery container,
- High impact ABS Casing,
- Ultra Low Self Discharge.

### Applications:

- Railway Signaling System,
- DC Power Supply,
- Emergency Lighting,
- Telecommunications,
- UPS & Online UPS,
- Network Communication Equipments,
- Medical Equipments,
- Power Stations,
- Solar Systems.





## TECHNICAL PARTICULARS

| TUBULAT GEL OPzV BATTERIES |                | Capacity               |                        |                        |                        |                        | Ri (m) | Dimension (mm) |       |        | Lead Weight (kg) | Gross Weight (kg) |
|----------------------------|----------------|------------------------|------------------------|------------------------|------------------------|------------------------|--------|----------------|-------|--------|------------------|-------------------|
| SR.NO.                     | Model Name     | C8 @ 25°C (1.80V/Cell) | C8 @ 25°C (1.77V/Cell) | C5 @ 25°C (1.77V/Cell) | C3 @ 25°C (1.75V/Cell) | C1 @ 25°C (1.67V/Cell) |        | Length         | Width | Height |                  |                   |
| 1                          | ZP4 OPzV 200   | 238                    | 232                    | 211                    | 188                    | 140                    | 1.2    | 105            | 208   | 420    | 13               | 19.5              |
| 2                          | ZP5 OPzV 250   | 298                    | 291                    | 263                    | 235                    | 174                    | 0.96   | 126            | 208   | 420    | 15               | 23.5              |
| 3                          | ZP6 OPzV 300   | 356                    | 349                    | 319                    | 281                    | 209                    | 0.8    | 147            | 208   | 420    | 19               | 28                |
| 4                          | ZP5 OPzV 350   | 427                    | 416                    | 371                    | 324                    | 234                    | 0.71   | 126            | 208   | 535    | 21               | 31                |
| 5                          | ZP6 OPzV 420   | 512                    | 499                    | 448                    | 389                    | 281                    | 0.6    | 147            | 208   | 535    | 24               | 36.5              |
| 6                          | ZP7 OPzV 490   | 597                    | 583                    | 520                    | 454                    | 329                    | 0.51   | 168            | 208   | 535    | 27               | 42                |
| 7                          | ZP6 OPzV 600   | 729                    | 710                    | 633                    | 562                    | 402                    | 0.45   | 147            | 208   | 710    | 34               | 50                |
| 8                          | ZP8 OPzV 800   | 972                    | 948                    | 845                    | 751                    | 537                    | 0.34   | 215            | 193   | 710    | 45               | 68                |
| 9                          | ZP10 OPzV 1000 | 1215                   | 1187                   | 1056                   | 936                    | 670                    | 0.27   | 215            | 235   | 710    | 55               | 82                |
| 10                         | ZP12 OPzV 1200 | 1463                   | 1417                   | 1267                   | 1125                   | 804                    | 0.23   | 215            | 277   | 710    | 65               | 97                |
| 11                         | ZP12 OPzV 1500 | 1669                   | 1648                   | 1437                   | 1239                   | 893                    | 0.24   | 215            | 277   | 855    | 80               | 120               |
| 12                         | ZP16 OPzV 2000 | 2225                   | 2200                   | 1916                   | 1650                   | 1191                   | 0.18   | 215            | 400   | 815    | 107              | 160               |
| 13                         | ZP20 OPzV 2500 | 2781                   | 2752                   | 2395                   | 2064                   | 1488                   | 0.14   | 215            | 490   | 815    | 133              | 200               |
| 14                         | ZP24 OPzV 3000 | 3337                   | 3304                   | 2874                   | 2475                   | 1786                   | 0.12   | 215            | 580   | 815    | 160              | 240               |

\* Any data, description or specification mentioned above are subject to revision by Z-Power Impex Pvt. Ltd. - India. While such information is believed to be accurate as mentioned above, Z-Power makes no guarantee and hereby disclaims all guarantees, express or implied with regard to the accuracy or completeness of such information. The user is solely responsible for determining the suitability of the product(s) mentioned above, user intended and in user specific application.

### OPzV Batteries

Z-Power offers Tubular Gel OPzV and OPzS batteries with a wide range of capacity options ranging from 2V 200AH to 2V 3000AH. These OpzV cells are Valve Regulated (VRLA) and are designed to provide superior performance for High Cyclic operations and Deep Cycling. These cells are made of high grade pure materials at state of the art manufacturing facility in India. It has thicker spines for Positive Tubular Plates casted at 150 bar pressure to ensure better compression and packing of Lead ensuring battery life cycle of 20+ years. No Acid stratification and failure due to partially state of charge and Gelled Electrolyte.

#### Key Features:

- Positive Electrodes with polyester gauntlet,
- PbCaSn Alloy with life expander material,
- Valve with flame arrestor,
- Flat Copper Connectors,
- Designed standby / float life of 20+ Years,
- Spill and Leak Proof Construction,
- Complete Maintenance Free operations. No Water Top-Up,
- Wide Operating Temperature Range (-20°C to +45°C)\*.

#### Applications:

- Wind Mills & Hydro Projects,
- Deep Cycling Services & Industrial Standby,
- Solar & UPS Systems,
- Oil and Gas Industry,
- Radio Base Station & Railway Signaling,
- Telecommunication.

"It does not matter how slowly you go, as long as you do not stop..." - Confucius.



## « TECHNICAL PARTICULARS

| FRONT TERMINAL BATTERY |      |                |              | Rated Capacity (AH)      |                         |                         |                         | Battery Dimension (mm) |     |     |     | Approximate Weight (kg) | Terminal |
|------------------------|------|----------------|--------------|--------------------------|-------------------------|-------------------------|-------------------------|------------------------|-----|-----|-----|-------------------------|----------|
| Sr. No.                | Volt | Capacity @ C10 | Model        | @C10<br>(1.80<br>v/cell) | @C8<br>(1.80<br>v/cell) | @C5<br>(1.75<br>v/cell) | @C1<br>(1.67<br>v/cell) | L                      | W   | H   | TH  |                         |          |
| 1                      | 12   | 40             | ZP-FT12/40   | 41.5                     | 40                      | 37.8                    | 27.7                    | 277                    | 106 | 222 | 222 | 15.1                    | T6       |
| 2                      | 12   | 55             | ZP-FT12/55   | 55                       | 53                      | 48.2                    | 35.9                    | 277                    | 106 | 222 | 222 | 17.3                    | T6       |
| 3                      | 12   | 70             | ZP-FT12/70   | 70                       | 67.4                    | 61.5                    | 45.7                    | 564                    | 114 | 187 | 187 | 25.5                    | T6       |
| 4                      | 12   | 75             | ZP-FT12/75   | 75                       | 73.1                    | 65.5                    | 49.5                    | 564                    | 114 | 187 | 187 | 26                      | T6       |
| 5                      | 12   | 90             | ZP-FT12/90   | 94.5                     | 90                      | 82                      | 61.4                    | 508                    | 110 | 239 | 239 | 32                      | T13      |
| 6                      | 12   | 90A            | ZP-FT12/90A  | 94.4                     | 90                      | 82                      | 61.4                    | 394                    | 110 | 285 | 285 | 31                      | T6       |
| 7                      | 12   | 90H            | ZP-FT12/90H  | 94.4                     | 90                      | 82                      | 61.4                    | 394                    | 110 | 285 | 285 | 32.6                    | T6       |
| 8                      | 12   | 100A           | ZP-FT12/100A | 100                      | 95.2                    | 87                      | 65                      | 508                    | 110 | 239 | 239 | 35                      | T13      |
| 9                      | 12   | 100B           | ZP-FT12/100B | 100                      | 96.8                    | 89                      | 64.3                    | 545                    | 110 | 233 | 233 | 35.6                    | T13      |
| 10                     | 12   | 100H           | ZP-FT12/100H | 100                      | 95.2                    | 87                      | 64.4                    | 394                    | 110 | 285 | 285 | 32.6                    | T6       |
| 11                     | 12   | 125            | ZP-FT12/125  | 125                      | 119.2                   | 108.5                   | 79.9                    | 552                    | 110 | 288 | 288 | 41.5                    | T6       |
| 12                     | 12   | 150            | ZP-FT12/150  | 150                      | 142.4                   | 130.5                   | 97.5                    | 552                    | 110 | 288 | 288 | 46.6                    | T6       |
| 13                     | 12   | 180            | ZP-FT12/180  | 180                      | 161.6                   | 148                     | 110.5                   | 550                    | 126 | 280 | 280 | 54                      | T13      |
| 14                     | 12   | 200            | ZP-FT12/200  | 200                      | 188.8                   | 173                     | 129.2                   | 560                    | 126 | 320 | 320 | 60                      | T11      |

\* Any data, description or specification mentioned above are subject to revision by Z-Power Impex Pvt. Ltd. - India. While such information is believed to be accurate as mentioned above, Z-Power makes no guarantee and hereby disclaims all guarantees, express or implied with regard to the accuracy or completeness of such information. The user is solely responsible for determining the suitability of the product(s) mentioned above, user intended and in user specific application.

### Front Terminal Batteries

Z-Power Front Terminal (FT) Series Batteries are reliable source of power package which combines remarkable high current characteristics and a long service life. It is widely accepted in multiple Utility Applications. These FT series of batteries can also be used in various Security Systems and Online Server Applications, where continuation of power is more important. Z-Power FT Batteries are an efficient power storage solution.

The Z-Power Front Terminal Battery Series is available with choice of Standard Casing or High Impact Fire Retardant ABS Casing and an option of AGM VRLA or AGM VRLA with Gel Electrolyte options.

#### Key Features:

- Front Access High Conductivity Copper Alloy Terminals,
- Valve Regulated and AGM & GEL Options,
- Virgin Lead with 1.6% Tin Alloy,
- Uniform Cell Cooling Technology,
- Complete Maintenance Free operations. No Water Top-Up,
- Explosion Proof / Safer and Secure,
- Wide Operating Temperature Range (-20°C to +50°C)\*,
- 12+ Years Design Float Life.

#### Applications:

- Cellular Radio & Oil / Gas Industry,
- Deep Cycling Services,
- Industrial Standby & Power Storage,
- Telecommunication,
- UPS & Online UPS,
- Solar Systems.

"The secret of getting ahead is getting started..." - Mark Twain.



## TECHNICAL PARTICULARS

| E-RICKSHAW BATTERY   | Volt (V) | Capacity (AH) @ 27°C | TECHNOLOGY    | Dimensions (mm)± 3mm |       |        | Terminal / Cell Layout | CURRENT CHARGING |                |                    |         |
|----------------------|----------|----------------------|---------------|----------------------|-------|--------|------------------------|------------------|----------------|--------------------|---------|
|                      |          |                      |               | Length               | Width | Height |                        | BOOST MODE (Amp) |                | TRICKLE MODE (mAh) |         |
| Model                |          |                      |               |                      |       |        |                        | Starting Rate    | Finishing Rate | Minimum            | Maximum |
| <b>TUBULAR RANGE</b> |          |                      |               |                      |       |        |                        |                  |                |                    |         |
| N/110Z (Jumbo)       | 12       | 95                   | TUBULAR PLATE | 403                  | 174   | 247    | A/E 0//1               | 12               | 5              | 100.0              | 400     |
| N/140Z (Jumbo)       | 12       | 120                  | TUBULAR PLATE | 403                  | 174   | 247    | A/E 0//1               | 12               | 5              | 110.0              | 440     |
| N/150Z (Jumbo)       | 12       | 140                  | TUBULAR PLATE | 403                  | 174   | 247    | A/E 0//1               | 12               | 5              | 110.0              | 440     |

\* Any data, description or specification mentioned above are subject to revision by Z-Power Impex Pvt. Ltd. - India. While such information is believed to be accurate as mentioned above, Z-Power makes no guarantee and hereby disclaims all guarantees, express or implied with regard to the accuracy or completeness of such information. The user is solely responsible for determining the suitability of the product(s) mentioned above, user intended and in user specific application.

### E-Rickshaw Batteries

Z-Power E-Rickshaw Batteries are extreme Deep Cycle batteries which combines its unique material combination with generation ahead technology for the Indian market. Calcium Tubular Deep Cycle battery launched in India for the very first time which performs well under extreme hot climatic situation, throughout the day. It is designed to deliver power yet remain alive for longer duration ever after extensive discharges on daily basis.

Z-Power E-Rickshaw Batteries are available in 3 technological flavors to offer flexibility and number of choice for the user. All of them are unique in their own state.

### Key Features:

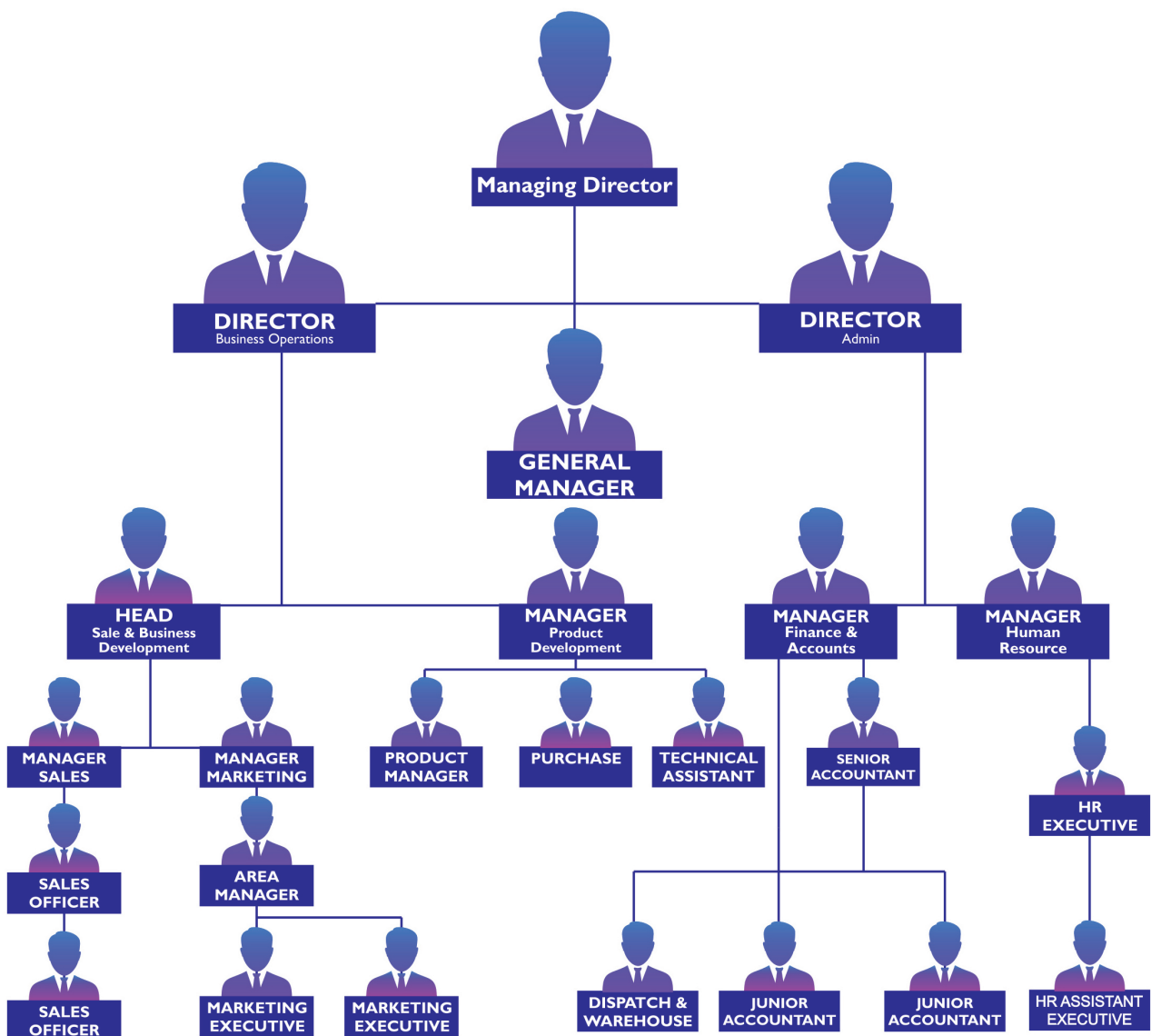
- Unique Calcium Hybrid Technology,
- Tubular Positive Plates & Extra thick flat plate options,
- High level of Deep Cycle ability,
- Long Service Life,
- Ultra Low maintenance,
- Excellent cyclic performance with quick charge acceptance,
- Flexible climate friendly with low gassing feature.



"Let us remember, one book, one pen, one child and one teacher can change the whole world..." - Malala Yousafzai.



## ORGANISATION STRUCTURE



# **BATTERIES FOR YOUR**

**Cars  
Home UPS  
Solar System and  
Industries...**

*A complete family isn't  
complete without Z-Power.*



**Z-POWER IMPEX (P) LTD.**

**SCO-1, Level 1, Opp. Park Plaza Hotel, Adjoining Best Price,  
Chandigarh-Dehli Highway, Zirakpur, 140603 (Punjab)**

**International Office:**

**INDUS TRADE SERVICES FZE, P6-69, SAIF Zone, P.B. No. : 121820, Sharjah - UAE**

**Toll Free No. 1800123008600    ✉ info@zpowerbatteries.com    🌐 www.zpowerbatteries.com**